

How to configure a direct call using S9III/S8

A “direct call” or “CSD call” is a GSM phone call between two SIM cards, one place in the base and another in the rover.

To work in this mode follow the steps below:

1. Insert in both receivers a SIM card.
2. Connect the receivers to the computer with the USB cable provided in the bundle.
3. Run Stonex S9III Assistant.
4. Select the right COM port.
5. Set the receivers following the setting instruction below.

1. Base Configuration

Set with Stonex Assistant as follows (Figure 1):

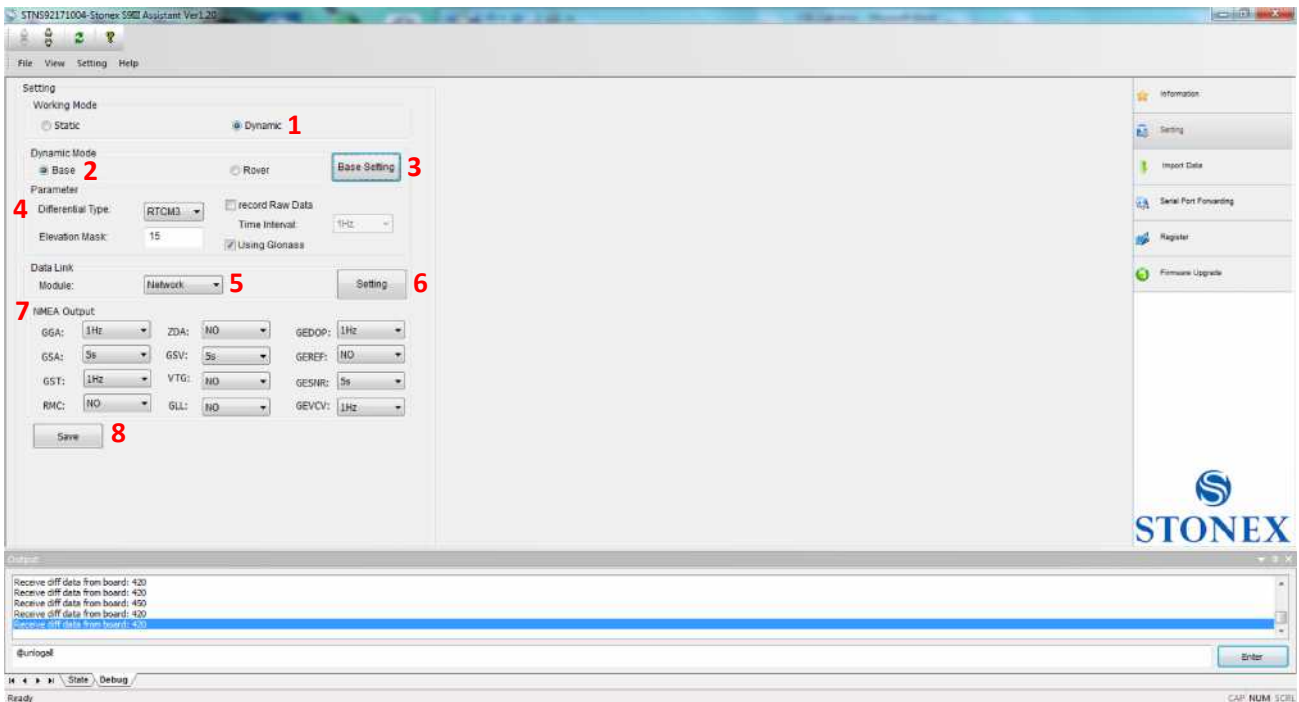


Figure 1

1. Working Mode: *Dynamic*
2. Dynamic Mode: *Base*
3. Click on **Base Settings** button:
 - a. Option: *Automatic Startup* must be flagged (see Figure 2)

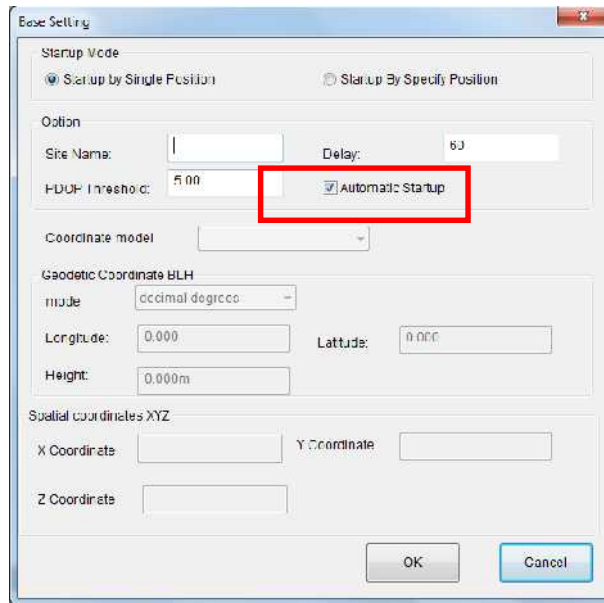


Figure 2

4. Parameters: it is left to the surveyor
5. Data Link: set as *Network*
6. Click on **Setting** button
 - a. Connection Mode set as *CSD*
 - b. CSD Setting: Base number set as *0*
 - c. GGA Upload set as '*NO*'
 - d. *Automatically connect* must to be flagged (see Figure 3)

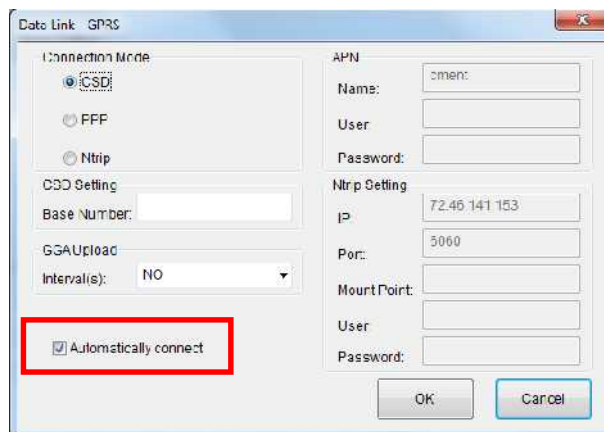


Figure 3

7. NMEA Output: it is left to the surveyor
8. When all the parameters are set click on Save button to configure the receiver.

2. Rover Configuration

Set with Stonex Assistant as follows:

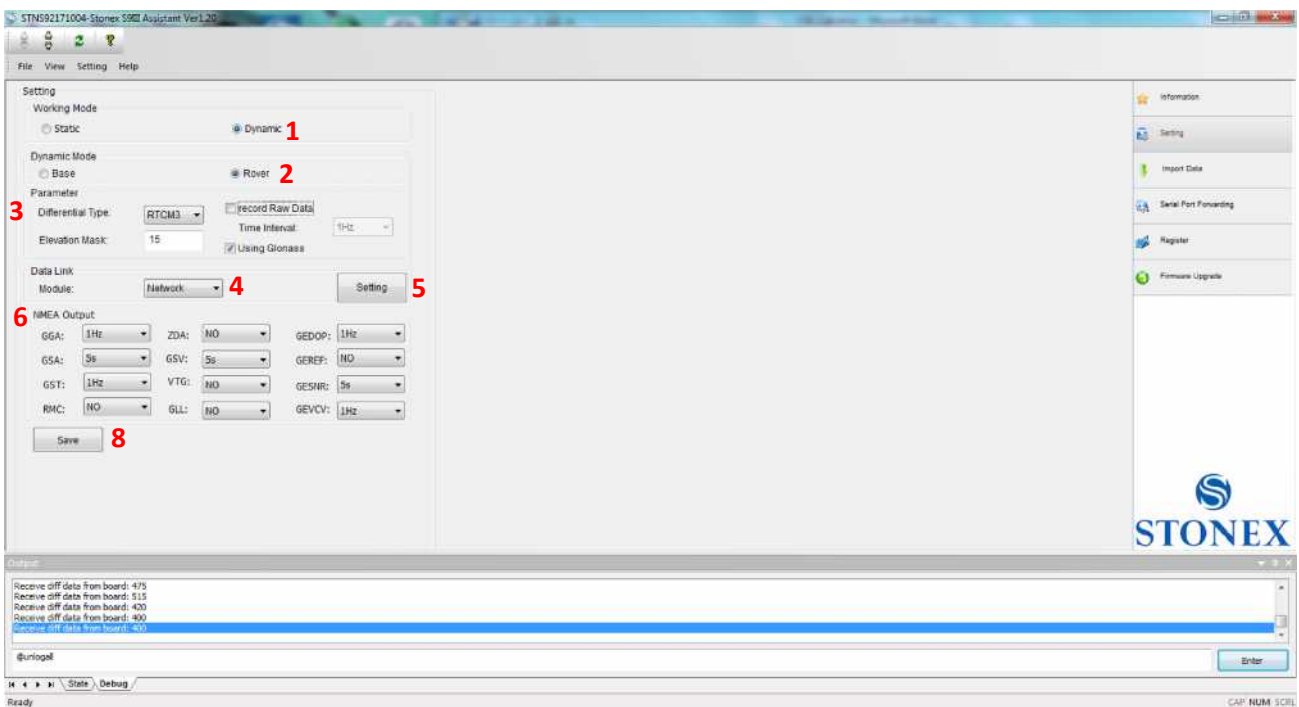


Figure 4

1. Working Mode: *Dynamic*
2. Dynamic Mode: *Rover*
3. Parameters: it is left to the surveyor
4. Data Link: set as *Network*
5. Click on **Setting** button
 - a. Connection Mode set as CSD
 - b. CSD Setting: *Base number* insert the telephone number of the Base
 - c. GGA Upload left to the surveyor (it depends on the corrections source)
 - d. *Automatically connect* must to be flagged (see Figure 5)

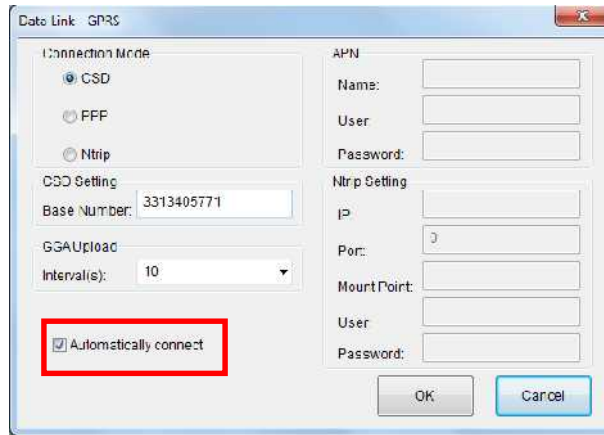


Figure 5

6. NMEA Output: it is left to the surveyor
7. When all the parameters are set click on **Save** button to configure the receiver.

3. **CSD Call**

Once the receivers are set, it is possible switch them off.

When the receivers will be switched on again the base will automatically start, you will see the gprs/gsm green led blinking, then the direct call, that starts from rover to base, will automatically connect and you will see that also gprs/gsm led in the rover starts to blink.

Important: it is necessary to start always at first the base and only when the base is ready, start the rover.